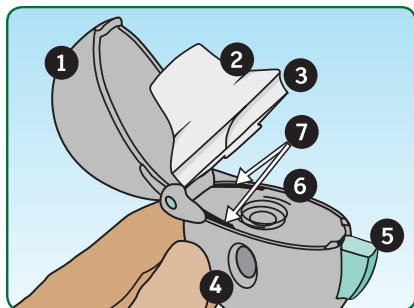


How To Use Your HandiHaler

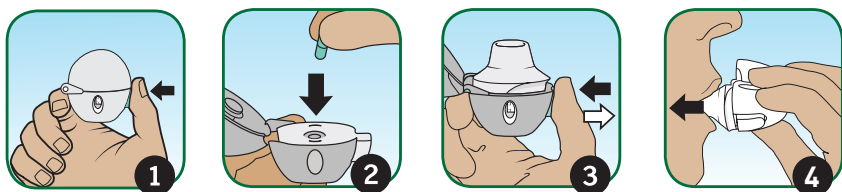
It's important to remember to take SPIRIVA every day and use your SPIRIVA HandiHaler correctly as prescribed by your doctor. This quick overview may help. For complete information on using the SPIRIVA HandiHaler, please see the Instructions for Use attached to your SPIRIVA HandiHaler prescription.

Familiarize yourself with the parts of your HandiHaler device:



1. Dust cap (lid)
2. Mouthpiece
3. Mouthpiece ridge
4. Base
5. Green piercing button
6. Center chamber
7. Air intake vents

Taking your dose of SPIRIVA requires 4 main steps:



1. Open the HandiHaler device. Separate only one of the blisters from the blister card; then open the blister.
2. Insert the SPIRIVA capsule and close the mouthpiece firmly against the gray base until you hear a click.
3. Press the green piercing button once until it is flat (flush) against the base, then release.
4. Breathe out completely. Then, with the HandiHaler in your mouth, breathe in deeply until your lungs are full. You should hear or feel the SPIRIVA capsule vibrate (rattle).

Remember, to take your full daily dose, you must inhale twice from the same SPIRIVA capsule.

Important information about using your SPIRIVA HandiHaler:

- Do not swallow SPIRIVA capsules
- SPIRIVA capsules should only be used with the HandiHaler device and inhaled through your mouth (oral inhalation)
- Do not use your HandiHaler device to take any other medicine

IMPORTANT SAFETY INFORMATION

Do not use Spiriva[®] HandiHaler[®] (tiotropium bromide inhalation powder) if you are allergic to tiotropium or ipratropium (e.g., Atrovent[®]) or any of the ingredients in SPIRIVA. If your breathing suddenly worsens, your face, throat, lips, or tongue swells, you get hives, itching or rash, stop taking SPIRIVA and seek immediate medical help.

SPIRIVA HandiHaler is not a rescue medicine and should not be used for treating sudden breathing problems.

Do not swallow SPIRIVA capsules. The contents of the capsule should only be inhaled through your mouth using the HandiHaler device.

If you have vision changes or eye pain or if you have difficulty passing urine or painful urination, stop taking SPIRIVA and call your doctor right away.

Tell your doctor if you have glaucoma, problems passing urine or an enlarged prostate, as these may worsen with SPIRIVA. Tell your doctor if you have kidney problems or are allergic to milk proteins. Ask your doctor if you are not sure. Also discuss with your doctor all the medicines you take, including eye drops.

The most common side effect with SPIRIVA is dry mouth. Others include constipation and trouble passing urine. For a complete list of reported side effects, ask your doctor or pharmacist.

Read the Patient Information and the step-by-step Instructions for Use for SPIRIVA before you use your inhaler.

INDICATION

Spiriva[®] HandiHaler[®] (tiotropium bromide inhalation powder) is a prescription medicine used once each day (a maintenance medicine) to control symptoms of chronic obstructive pulmonary disease (COPD) by relaxing your airways and keeping them open. COPD includes chronic bronchitis, emphysema, or both.

SPIRIVA HandiHaler also reduces the likelihood of flare-ups and worsening of COPD symptoms (COPD exacerbations).

You are encouraged to report negative side effects of prescription drugs to the FDA. Visit www.fda.gov/medwatch or call 1-800-FDA-1088.

Please see accompanying full Prescribing Information, including Patient Information and Instructions for Use.