



InPharmation

The official publication of the Pharmacy Department
Volume 1, Issue 9

Inside this issue:

Formulary Changes, Patient Safety
Corner, Cover story cont 2

Regulatory Information and Dates
to Remember 3

Staff Spotlight

Breanna Lorick, PharmD

Favorite Scripture: I can do all things through Christ who strengthens me. Philippians 4:13



Born and raised in Destrahan, LA, Breanna can be found bouncing around the main pharmacy as a part of the Main/Charge pharmacy group. She loves having the ability to play a vital role in healthcare and having an impact on health care decisions. Breanna's dream career would be a pediatric clinical pharmacist, but she would also love to be a makeup artist where she could express her artistic side!

Breanna enjoys shopping, spending time with family and eating! This Thanksgiving, Breanna will be working, but she has plenty to be thankful for. She is thankful for an amazing support system that has helped her transition to being a licensed pharmacist and is grateful that her mom will have a hot meal waiting for her. However, Breanna will be home for Christmas, her favorite time of the year. She is excited to celebrate with her family and enjoy all of the love. Breanna loves love and has an awesome spirit. She would take the hate out of people's hearts if she could!

The 50th ASHP Midyear Clinical Meeting & Exhibition

By Stephanie Chang, PharmD

It's that time of year again. The largest gathering of pharmacists and the longest running clinical meeting in the world is happening in December! This year, ASHP's Midyear Clinical Meeting will be celebrating its 50th anniversary in New Orleans from December 6 - 10 at the Ernest N. Morial Convention Center with more than 20,000 pharmacy professionals from about 100 countries. For this milestone, former President George W. Bush and First Lady Laura Bush will be presenting the keynote address. This will certainly be a special highlight to this year's Midyear meeting with the 43rd President of the United States and his wife opening the general session.

Midyear will be a great opportunity for pharmacy practitioners to update their knowledge, network with colleagues, enhance their skills, and learn about the latest products and innovations. There are educational sessions for everyone, from student to new practitioner, technician to pharmacy director. Attendees can earn up to 30 contact hours of continuing education credit with over 100 educational CE activities to choose from. For the full meeting program and session details, see the [website](#). The complete program will also be available on the ASHP LIVE App by November 15, which will allow users to view the complete agenda, create your own schedule, receive announcements, obtain the most up-to-date information, and more. For pharmacy technicians planning to attend, the education sessions marked with a "T" at the end of the ACPE Activity Number will be of particular interest. Handouts for educational sessions will all be available online two weeks prior to the meeting and audio-synched educational session presentations will be available afterwards for viewing. ASHP will also provide specialty review and recertification events live, such



as a pharmacotherapy specialty review course and a geriatric specialty intensive studies package. See their [website](#) for a full list.

As always, the two largest recruitment events of Midyear will be taking place: the Residency Showcase and the Personnel Placement Service (PPS). The Residency Showcase is for individuals pursuing residency positions in 2015–16. There will be an afternoon session on Monday, December 7 and a morning and afternoon session Tuesday, December 8. The Personnel Placement Service (PPS) allows individuals to set up interviews with over 300 hiring employers and is a great opportunity for anyone interested in pursuing a residency, fellowship, a full-time position in health-system pharmacy, and more. It will take place December 6–9 from 7:30 am–5:00 pm.

The Wednesday night closing party is an ever-popular event. This year, a Mardi Gras-themed celebration will feature live music and light hors d'oeuvres to close up ASHP's golden Midyear.

It's not too late to [register](#)! The full registration fee for pharmacists is \$690 for ASHP members (\$295 for ASHP membership) and \$1035 for non-members. The registration fee for pharmacy technicians is \$360 for ASHP members (\$74 for ASHP membership) and \$480 for non-members. Online registration closes on December 3.

Added to formulary:

- Sarcubitril and valsartan (Entresto): Restricted to continuation of home medication
- Pralatrexate (Folotyn): Restricted to the outpatient setting

Newly added restrictions:

- Colistimethate (coly-mycin M): Restricted to ID & pulmonary/critical care physicians
- Calcitonin (Miacalcin): Restricted to patients with symptomatic hypercalcemia
 - ◇ Must have elevated calcium level $\geq 13\text{mg/dL}$
 - ◇ Dose: $4\text{IU/kg} \times 2$ doses
 - ◇ Must be approved by clinical pharmacist on call PRIOR TO dispensing
- Ethacrynic acid (Edecrin): Must have documented sulfa allergy
 - ◇ Clinical pharmacist will contact Dr. Moraes for approval of use
 - ◇ Pharmacist can dispense ONE DOSE after hours

Removed from formulary:

- Resistant Gram positive agents: Quinupristin/dalfopristin (Synercid)
- PO Antivirals: Rimatadine (flumadine)
- Macrolides:
 - ◇ Erythromycin (Base) DR 333mg tablet
 - ◇ Erythromycin EES 400mg tablet (E.E.S. 400)

New Therapeutic Interchanges:

- The following will be interchanged to Sitagliptin (Januvia)
 - ◇ Alogliptin (Nesina)
 - ◇ Linagliptin (Tradjenta)
 - ◇ Saxagliptin (Onglyza)

Pharmacy Practice Changes

As of October 27th the pharmacy is now dispensing partially used MDI's to discharge Peds patients. The partially used MDI is dispensed using QS1 in the Peds satellite by a Peds day shift pharmacist. The purpose of this implementation is to provide pediatric patients admitted with an asthma exacerbation an inhaler upon discharge to reduce the chances of short-term readmission.

Dopamine

The pharmacy stocks three different concentrations of Dopamine premixed infusion, and all three presentations look very similar. We stock the following:

- Dopamine 400mg/250ml
- Dopamine 800mg/ 500ml
- Dopamine 800mg/250ml (double concentration)

Crash carts should only be stocked with Dopamine 400mg/250mL. Please ensure when filling crash carts that this strength is the only strength in the cart. Dopamine 800mg/250mL bags will now be stored in the Peds satellite. Should a patient in a critical care unit need this strength, a bag may be pulled from the Peds satellite.

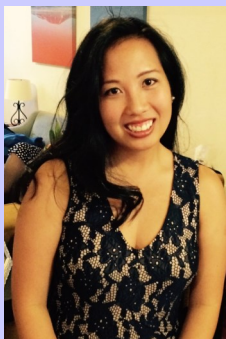
Chemotherapy Preparation

Due to continuous reports of infusion volume and infusion duration discrepancies, effective immediately, the main pharmacy IV room will no longer use the repeater pump to prepare chemotherapy orders. As a result, of this process change, all volume being transferred into an empty bag must be transferred using syringes. The preparer should now provide a picture of the following:

- The bag the fluid is being transferred from coming
- All syringes used to draw up necessary volume
- All empty syringes once volume has been transferred to the appropriate bag

Woman's Hospital PGY-1 Pharmacy Practice Resident

Tam Le, PharmD



Please give a nice warm welcome to Tam Le, a PGY-1 Pharmacy Practice Resident from Woman's Hospital. Tam will be with us for the month of November completing an Internal Medicine rotation with Lucy and will return in the Spring for two more rotations. Tam was born in France and moved to the United States when she was 5 years old. When she was a child, Tam wanted to grow up to become an astronaut. One day, she realized that she was not a fan of math and got motion sickness very easily; thus she changed her mind and decided to pursue another career option. Tam graduated from the University of Texas with a degree in Biochemistry, then she joined the Air Force upon graduation in 2007. She served 4 years in the Air Force and spent 6 months in Afghanistan during her service. Finally, Tam obtained her Doctorate of Pharmacy and graduated from University of Louisiana at Monroe in 2015 bringing her here to Baton Rouge upon graduation.

Regulatory

Recent FDA Drug Approvals

- **Aripiprazole lauroxil (Aristada)** Extended-release injectable suspension indicated for the treatment of schizophrenia
- **Idarucizumab (Praxbind)** Newly approved reversal agent for Dabigatran. Indicated for the reversal of the anticoagulant effect of dabigatran in emergency surgery/ urgent procedures and life-threatening/ uncontrolled bleeding.
- **Coagulation Factor X [Human] (Coagadex)** lyophilized powder for solution indicated for intravenous injection in adults and children greater than 12 years old with hereditary Factor X deficiency on –demand treatment and control of bleeding episodes . It is also indicated in the setting of perioperative management of bleeding in patients with a mild hereditary Factor X deficiency.
- **Patiromer (Veltassa)** Oral suspension indicated for the treatment of hyperkalemia
- **Trabectedin (Yondelis)** Injection for intravenous use indicated for the treatment of patients with unresectable or metastatic liposarcoma or leiomyosarcoma who have previously received an anthracycline containing chemotherapy regimen.
- **Asfotase Alfa (Strensia)** subcutaneous injection indicated for the treatment of perinatal and juvenile onset hypophosphatasia
- **Talimogene laherparepvec (Imlygic)** Newly approved intralesional injection indicated for the local treatment of unresectable cutaneous, subcutaneous, and nodal lesions in patients with melanoma that reoccurs after initial surgery

FDA Drug Recalls:

None affecting OLOL.

Louisiana Board of Pharmacy

Pharmacist License Renewal:

- Renewal cycle opens November 1, 2015
 - ◇ Check your mail for renewal papers & instructions from LBOP
- Current pharmacist licenses expire at MIDNIGHT on December 31,2015
 - ◇ There will be no grace period
- Fee for renewal: \$100

WANTED

Pharmacy Technician to participate on Newsletter Committee

Committee member responsibilities include:

- Attending monthly committee meetings (2nd Monday of the month at 2:30)
- Bring ideas for newsletter content

Any interested persons should email:

Jennifer.jones2@ololrnc.com

INPHARMATION EDITORIAL STAFF

Content Editor

Carli Nesheiwat, PharmD, BCOP

Page Editor

Jennifer Jones, PharmD, BCPS

Writing Staff

Ashley Joseph, PharmD

Brandi LaFrance, PharmD, BCPS

Katie Ducote, PharmD, BCPS

Kellee Brown, PharmD

Stephanie Chang, PharmD

Lauren Linder, PharmD

Dates to Remember

November 18th: Lunch N Learn with Stephanie and Lauren

November 19th @ 6pm: LSHP CE @ Woman's Hospital

November 19th: Department Thanksgiving Meal

November 26th: Thanksgiving Day

November 30th: Last day to enroll for BENEFITS

December 1st: World AIDS Day

December 6th -10th: ASHP Mid-Year in New Orleans

December 8th: Christmas Party and Tree Lighting in HVI Lobby